



M/s **KARYAN INFRATECH LLP** (Promoter of the Project) | **RERA Regn. No.:** UPRERAPRJ848589 | www.up-rera.in
Corp. Office: A-27, Third Floor, Sector-67, Noida, UP-201301. | **Site Office:** 1A, Sector-02 (Pinewood Enclave) Wave City, NH-24, Ghaziabad
Contact: +91 7887 85 85 85 | **Email:** info@karyaninfotech.com | **Web.:** www.karyaninfotech.com

Disclaimer: Images in the brochure used for artistic impression to give the conceptual sense of possible lifestyle. It can be changed at the discretion of the developer and is not a legal commitment on design or specifications. | 1sq. mtr. = 10.764 sq. ft. and 1 acre = 4047 sq. mtr. (approx.). * Terms & Conditions apply.



PROUDLY BROUGHT TO YOU BY:



WE COLLABORATE | WE INNOVATE | WE EXCEL

Karyan Infratech is backed by over 15 years of experience and expertise of the Karyan Group along with select promoters of the Saviour Group - premier real estate developers of Delhi/NCR, offering residential, commercial, retail projects and warehousing in PAN India.



Happiness
ALL AROUND

Artistic Impression



Artistic Impression

STUDIO LOTUS

NEW DELHI

AWARD
WINNING
DESIGN FIRM

DEVELOPED ULTRA MODERN
FACADE FOR THE PROJECT

Studio Lotus is an international award-winning design firm. They master in planning, architecture and interiors of large-scale development and commercial spaces, hotels and resorts, government projects. The most significant clientele includes Max Estates, Royal Enfield, Godrej Properties, DLF, RAAS Group of Hotels, Taj Hotels, Radisson Hotels, Aloft Hotels, Oberoi Realty & many more renowned companies.



Artistic Impression

A PLUS
DESIGN
ASSOCIATES

A Plus Design Associates is accomplished in the field of planning, design, and execution of urban projects. They have designed and built around 7 million sq. mtr. built-up area which includes townships, commercial complexes, residential developments, hospitals and entertainment centers.

CESPL

With over 33 years of experience, in mechanical, electrical, plumbing, engineering design and consultancy, CESPL has handled more than 500 projects which include group housing, commercial, institutional and township planning projects.



Artistic Impression

EXCELLING EXPECTATIONS



LOCATED AT WAVE CITY WITH MODERN AMENITIES
& STATE OF THE ART INFRASTRUCTURE



PRIME LOCATION
AT NH-24
14 LANE EXPRESSWAY



PREMIUM
LIFESTYLE
BRANDS



AMPLE CAR
PARKING SPACE



RAIN WATER HARVESTING



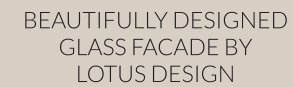
WIDE CORRIDORS



DEDICATED LIFTS
& ESCALATORS



SURROUNDED BY
DEVELOPED SECTORS



BEAUTIFULLY DESIGNED
GLASS FACADE BY
LOTUS DESIGN



LUSH GREEN
LANDSCAPING

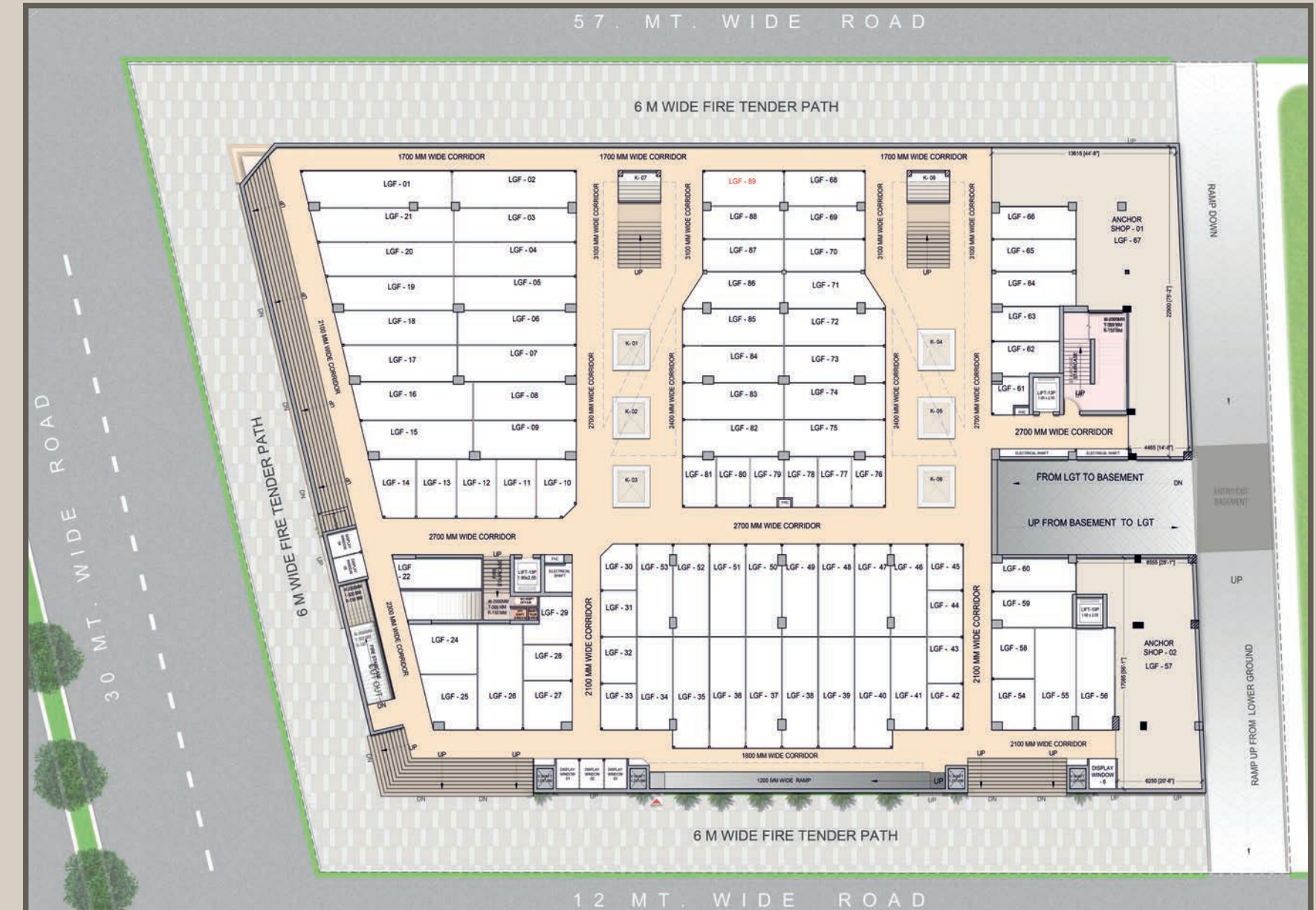


24X7
POWER BACKUP



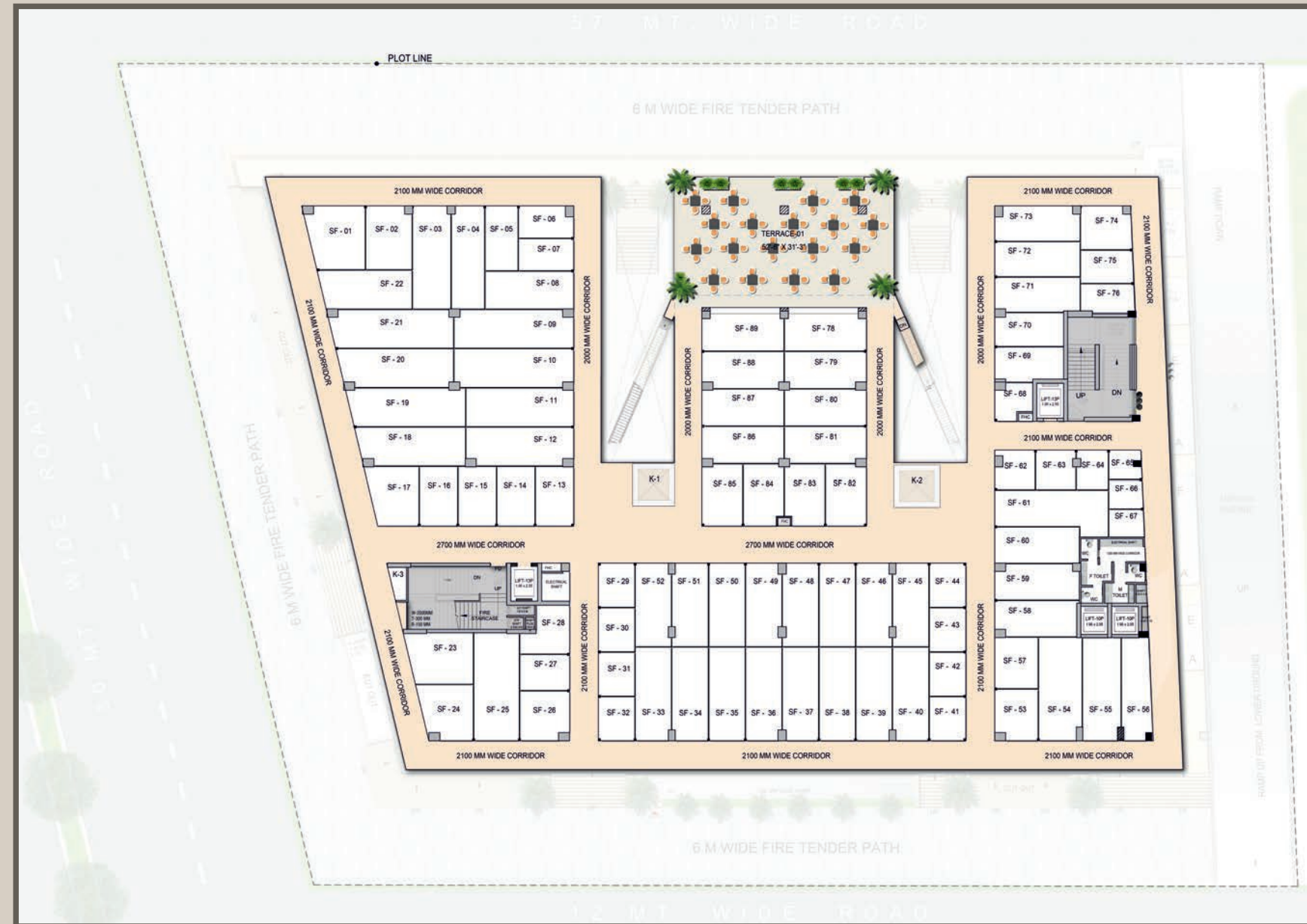
24X7 ADVANCED
SECURITY

LOWER GROUND FLOOR PLAN

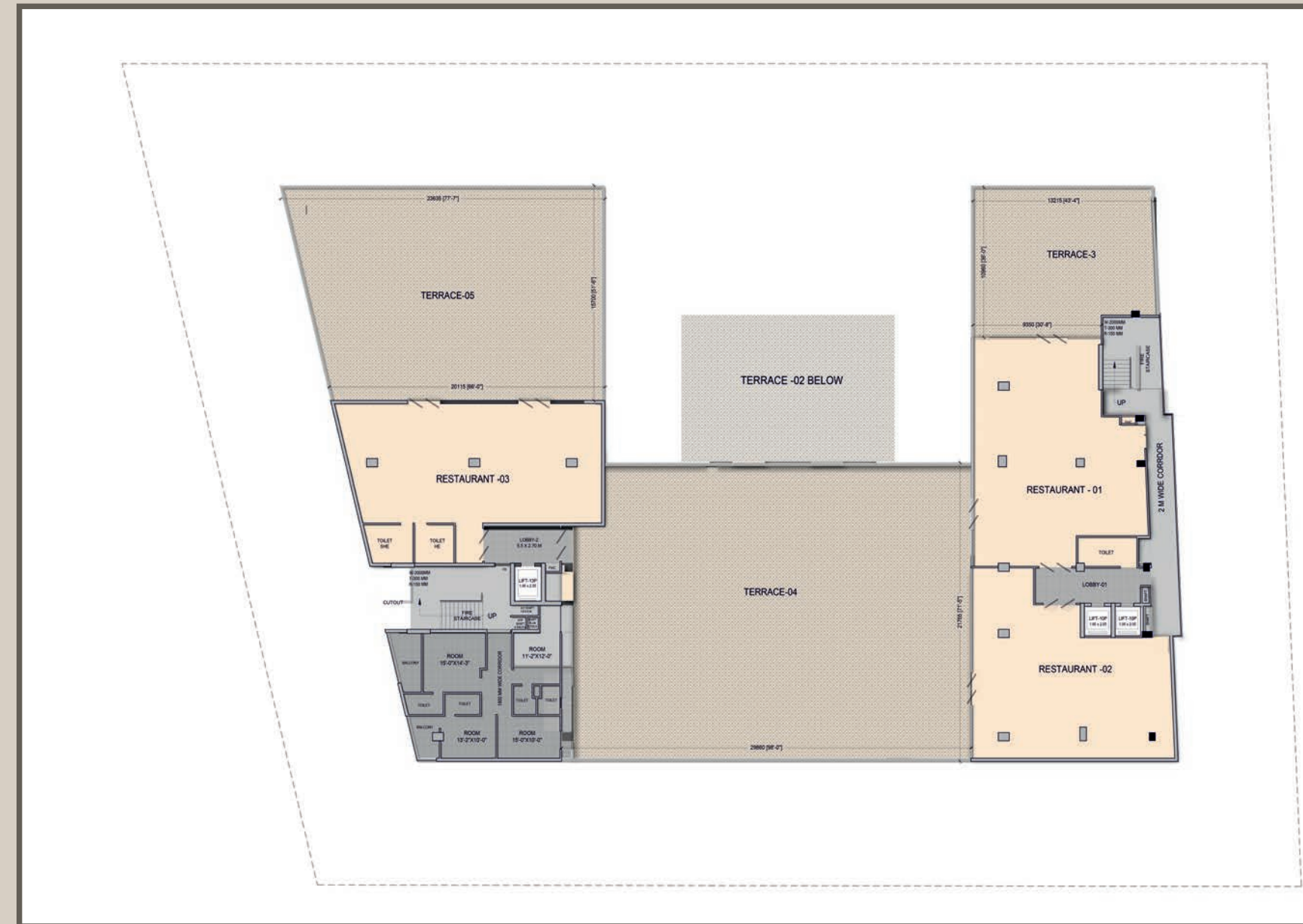


[illegible][illegible]

SECOND FLOOR PLAN



FOURTH FLOOR PLAN



STRATEGICALLY POSITIONED

AT NH 24

PIVOTAL

TO WAVE CITY

A 4500 ACRE TOWNSHIP, LARGEST IN NORTH INDIA.



KARYAN

CityWalk



5 min from
Eastern Peripheral
Expressway



20 min
drive from
Delhi



15 min from
Ghaziabad
Railway Station



5 min from
Manipal Hospital
(Columbia Asia)

KARYAN

SAVIOUR